

Riser Card



GA620RS

Dimensions(mm) : 95(L) x 43.5(W) x 20(H)

Descriptions : PCI Riser Card

Apply to : Mini-ITX Case GA620 Series



GA620RSE

Dimensions(mm) : 99(L) x 43.5(W) x 16(H)

Descriptions : X16 PCI-E Riser Card

Apply to : Mini-ITX Case GA620 Series

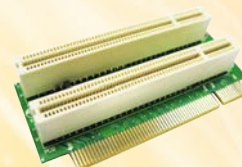


GA620RSE4

Dimensions(mm) : 99(L) x 43.5(W) x 16(H)

Descriptions : X4 PCI-E to X16 PCI-E Slot Riser Card

Apply to : Mini-ITX Case GA620 Series



GA630RSI2

Dimensions(mm) : 95(L) x 43.5(W) x 20(H)

Descriptions : 2PCI Slots Riser Card

Apply to : Mini-ITX Case GA620 Series



GA610RS

Dimensions(mm) : 111(L)x 66(W)x 20(H)

Descriptions : PCI Riser Card

Apply to : Mini-ITX Case GA610 Series



GA610RSE

Dimensions(mm) : 111(L)x 66(W)x 16(H)
With Cable L=100mm

Descriptions : X16 PCI-E Riser Card

Apply to : Mini-ITX Case GA610 Series

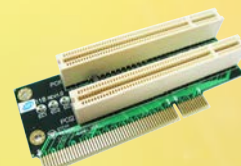


GA6701RSE

Dimensions(mm) : 115.5(L)x 49(W)x 16(H)

Descriptions : X16 PCI-E Riser Card

Apply to : Mini-ITX Case GA6701 Series

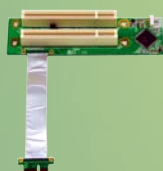


GA6702RS

Dimensions(mm) : 110(L)x 45(W)x 20(H)

Descriptions : 2 Slots PCI Riser Card

Apply to : Mini-ITX Case GA6701 Series



GA604E1RS2

Dimensions(mm) : 140(L)x 39(W)x 16(H)
With Cable L=100mm

Descriptions : X1 PCI-E to 2 Slots PCI Riser Card

Apply to : Special Use



GA604E1RSE12

Dimensions(mm) : 140(L)x 39(W)x 16(H)
With Cable L=100mm

Descriptions : X1 PCI-E to 2 Slots X1 PCI-E Riser Card

Apply to : Special Use

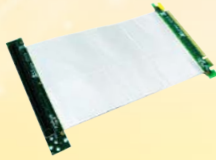
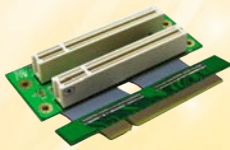


GA161RSE

Dimensions(mm) : 145(L)x 112.5(W)x 9(H)
With Cable L=100mm

Descriptions : X16 PCI-E Riser Card

Apply to : Mini-ITX Case GA160 Series or 1U rackmount chassis use



GA160RS

Dimensions(mm)	: 112(L) x 39(W) x 20(H) With Cable L=50mm
Descriptions	: 2 Slots PCI Riser Card
Apply to	: Mini-ITX Case GA160 Series or 1U rackmount chassis use

GA160RSE

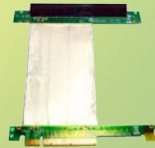
Dimensions(mm)	: 117.5(L)x16.5(W)x16(H) With Cable L=100mm
Descriptions	: X16 PCI-E Riser Card
Apply to	: Mini-ITX Case GA160 Series or 1U rackmount chassis use

GA601RS

Dimensions(mm)	: 110(L) x 27(W) x 20(H)
Descriptions	: PCI Riser Card
Apply to	: 1U Low Profile Series

GA601RSE

Dimensions(mm)	: 115(L) x 27(W) x 13(H)
Descriptions	: X16 PCI-E Riser Card
Apply to	: 1U Low Profile Series



GA603RSE1

Dimensions(mm)	: 117.5(L)x16.5(W)x16(H) With Cable L=100mm
Descriptions	: X1 PCI-E , X16 Slot Riser Card
Apply to	: 1U Low Profile Series or GA620 Series

GA603RSE4

Dimensions(mm)	: 117.5(L)x16.5(W)x16(H) With Cable L=100mm
Descriptions	: X4 PCI-E , X16 Slot Riser Card
Apply to	: 1U Low Profile Series or GA620 Series

GA603RSE8

Dimensions(mm)	: 117.5(L)x16.5(W)x16(H) With Cable L=100mm
Descriptions	: X8 PCI-E , X16 Slot Riser Card
Apply to	: 1U Low Profile Series or GA620 Series

GA602RSE1

Dimensions(mm)	: 41.8(L)x19(W)x16(H) With Cable L=100mm
Descriptions	: X1 PCI-E
Apply to	: 1U Low Profile Series or GA620 Series



GA604RSE1

Dimensions(mm)	: 40(L)x 29.3(W)x11.1(H)
Descriptions	: X1 PCI-E Riser Card
Apply to	: Special Use

GA9602RS

Dimensions(mm)	: 110(L)x 46(W)x20(H)
Descriptions	: PCI Riser Card
Apply to	: Special Use

GA604RSE4

Dimensions(mm)	: 60(L)x 29.3(W)x16(H)
Descriptions	: X4 PCI-E Riser Card
Apply to	: Special Use

GA283RS

Dimensions(mm)	: 125(L)x 62.1(W)x17(H)
Descriptions	: 2 Slots PCI Riser Card
Apply to	: Special Use