

### ► FEATURES

- 10A switching capability
- Small size, suitable for high-density mounting.
- 5kV dielectric strength  
(Between coil and contacts)
- 2.0mm contact gap available
- UL insulation system: Class F available
- Suitable for remote control TV set, copy machine, sales machine and air conditioner etc.



29.0\*13.0\*26.3

### ► CONTACT DATA

Contact Arrangement		2A, 2C
Contact Material		Silver alloy
Contact Rating (resistive)		Resistive: 10A/250VAC, 8A/30VDC
Max. Switching Power		2500VA/240W
Max. Switching Voltage		250VAC/30VDC
Max. Switching Current		10A
Contact Resistance or Voltage drop		≤50mΩ (at 1A 24VDC)
Operation life	Electrical	1*10 <sup>5</sup>
	Mechanical	1*10 <sup>7</sup>

### ► COIL PARAMETER

Standard type

Coil voltage (VDC)		Coil resistance (Ω±10%)	Pickup voltage(max)(VDC) (80% of rated voltage)	release voltage(min) (VDC) (10% of rated voltage)	Coil power consumption (W)	Operate Time (ms)	Release Time (ms)
Rated	Max.						
3	3.9	17	2.40	0.3	Approx. 0.53	≤15	≤5
5	6.5	47	4.00	0.5			
6	7.8	68	4.80	0.6			
9	11.7	160	7.20	0.9			
12	15.6	275	9.60	1.2			
18	23.4	620	14.40	1.8			
24	31.2	1100	19.20	2.4			
48	62.4	4170	38.40	4.8			
60	78.0	7000	48.00	6.0			

W type (1.5mm)

Coil voltage (VDC)		Coil resistance (Ω±10%)	Pickup voltage(max)(VDC) (75% of rated voltage)	release voltage(min) (VDC) (10% of rated voltage)	Coil power consumption (W)	Operate Time (ms)	Release Time (ms)
Rated	Max.						
3	3.3	11.3	2.25	0.3	Approx. 0.80	≤15	≤5
5	5.5	31	3.75	0.5			
6	6.6	45	4.50	0.6			
9	9.9	101	6.75	0.9			
12	13.2	180	9.00	1.2			
18	19.8	405	13.50	1.8			
24	26.4	720	18.00	2.4			
48	52.8	2880	36.00	4.8			
60	66.0	4500	45.00	6.0			

## ► COIL PARAMETER

W type (2.0mm)

Coil voltage (VDC)		Coil resistance ( $\Omega \pm 10\%$ )	Pickup voltage(max)(VDC) (75% of rated voltage)	release voltage(min) (VDC) (10% of rated voltage)	Coil power consumption (W)	Operate Time (ms)	Release Time (ms)
Rated	Max.						
5	5.5	18	3.75	0.5	Approx. 1.40	$\leq 15$	$\leq 5$
6	6.6	26	4.50	0.6			
9	9.9	58	6.75	0.9			
12	13.2	102	9.00	1.2			
24	26.4	410	18.00	2.4			
48	52.8	1650	36.00	4.8			

## ► OPERATION CONDITION

<b>Insulation Resistance</b>	1000M $\Omega$ min (at 500VDC)
<b>Dielectric Strength</b> <b>Between contacts</b>	Standard: 1000VAC 1min W type(1.5mm): 2000VAC 1min L type(2.0mm): 2500VAC 1min
<b>Between contact and coil</b>	5000V 1min
<b>Shock resistance</b> <b>Functional</b>	98m/s <sup>2</sup>
<b>Destructive</b>	980m/s <sup>2</sup>
<b>Vibration resistance</b>	10~50Hz amplitude 1.5mm
<b>Ambient Temperature</b>	-40~85 $^{\circ}$ C
<b>Relative Humidity</b>	5% to 85%
<b>Weight</b>	Approx. 18g

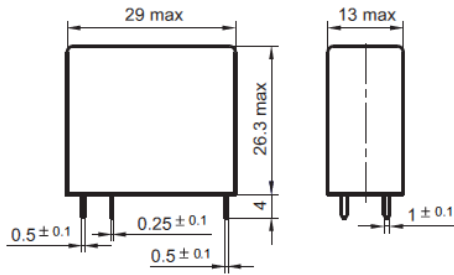
## ► ORDERING INFORMATION

	<b>GQ2</b>	<b>-12D</b>	<b>B</b>	<b>-2A</b>	<b>W</b>	<b>B</b>	<b>1</b>	<b>-S</b>	<b>(XXX)</b>
<b>Model</b>									
<b>Coil Voltage</b>	5, 6, 9, 12, 18, 24, 48, 60VDC								
<b>Insulation Standard</b>	Nil: Class F    B: Class B								
<b>Contact Arrangement</b>	2A: 2 Form A    2C: 2 Form C								
<b>Contact Gap</b>	Nil: Standard W: Large Contact Gap 1.5mm for 2 Form A L: Large Contact Gap 2.0mm for 2 Form A								
<b>Contact Material</b>	Nil: AgSnO <sub>2</sub> B: AgCdO    F: AgNi								
<b>Contact Plating</b>	Nil: No gold plated    1: Gold plated								
<b>Construction</b>	Nil: Flux tight    S: Sealed								
<b>Special Code</b>	Nil: Standard    XXX: Customer special requirement								

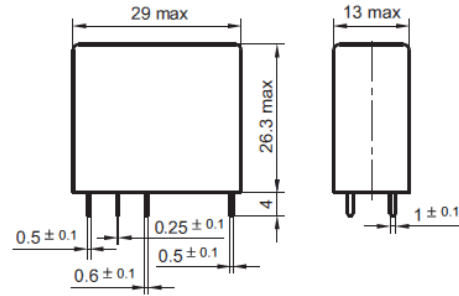
**► DIMENSIONS (UNIT: mm)**

**2 Form A**

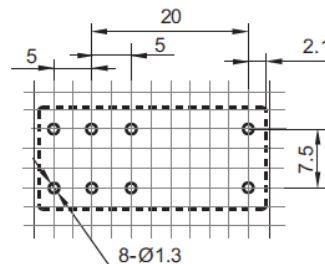
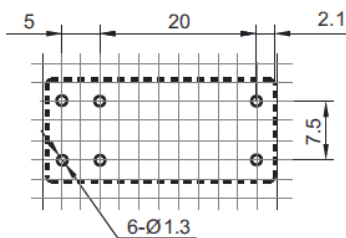
Dimension



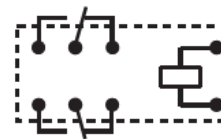
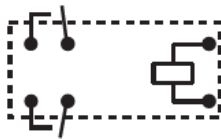
**2 Form C**



**Mounting (Bottom views)**



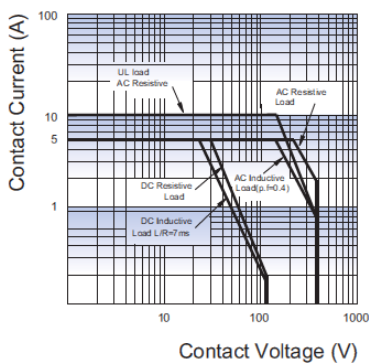
**Wiring diagram(Bottom views)**



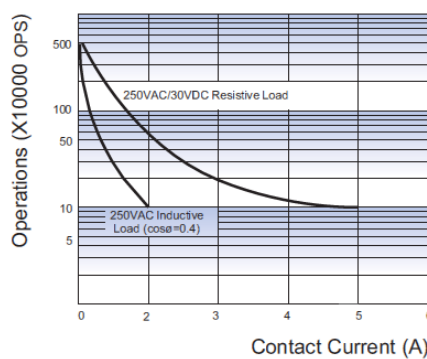
- NOTES** 1) Dimensions are in millimeter.  
2) Inch equivalents are given for general information only.

**► REFERENCE DATA**

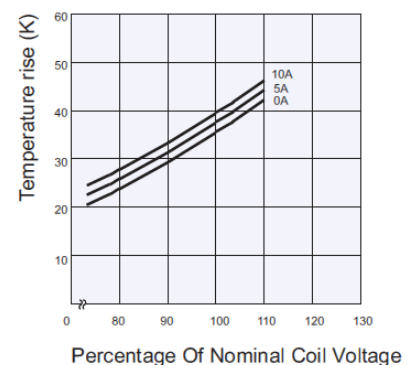
**MAXIMUM SWITCHING POWER**



**ENDURANCE CURVE**



**COIL TEMPERATURE RISE**



**Test conditions:**  
No, Resistive load, Flux proofed,  
Room temp., 1s on 9s off.