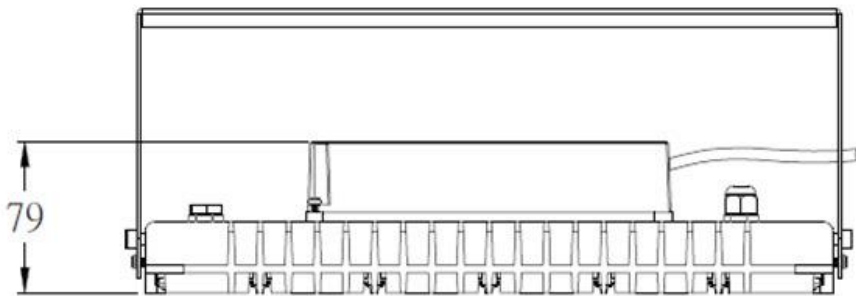
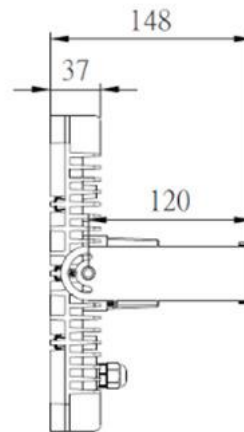
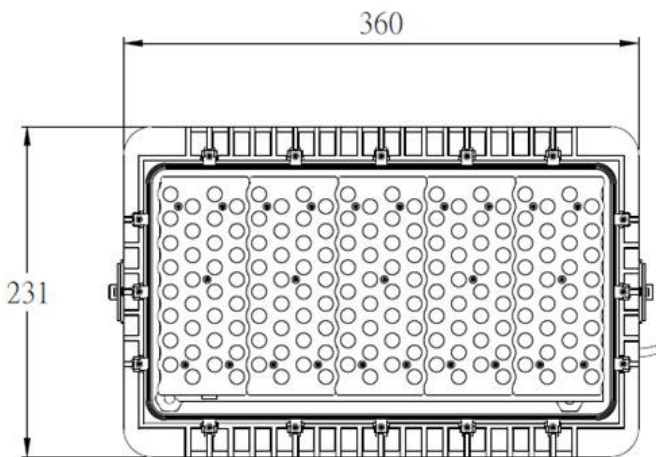
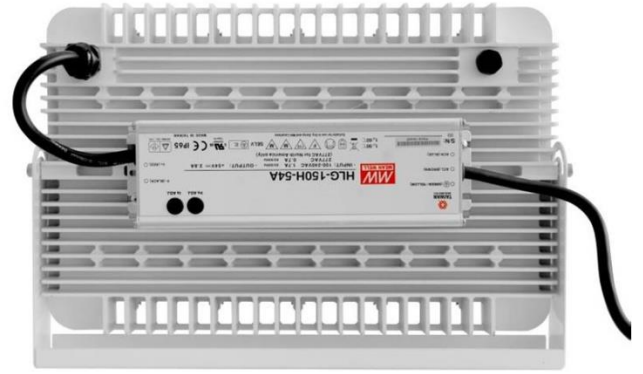
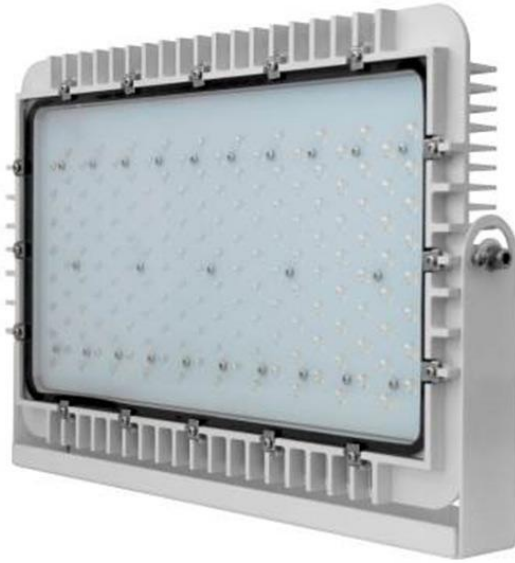






SPECIFICATION

PART NO.:CF1135CS
Flood Light / High Bay
LED Lamp



CF1135CS

Model NO.	CF1135CS
System Watts	135W±5%
LED Chip	 OSRAM
CRI	≥ 82
LED nos.	160pcs
Luminous flux (Cool White)	≥ 14,850 lm ≥ 110 lm/w
Drivers	 MeanWell HLG-150 IP67 1-10V Dimmable, PF > 0.98
AC Input	AC 90~305V
Driver nos.	x1 Driver (Inside or Outside)
Dimming	1-10V
IP Rating	IP67
Beam Angles	15°/30°/60°/80°/90°/110°, PC Lens(90°/110° special lens)
Front Cover	Tempered proof glass
Lens material	Optical class PC
Weight	3.4~3.9kg (include driver and bracket)
Carton Size	L408*W312*H157 (mm)
Total Weight	4.4kg
Weight	UL 18AWG 300V Wiring with waterproof connector, 1.2M
Heat-sink	ADC12 Die-casting Aluminum, White painting, Natural cooling
Bracket	Rotary bracket, Material:SPHC,pure white or black painting.
Environmental Material	Material with ROHS / REACH compliant & certification
Accessories (optional)	<ul style="list-style-type: none"> ● Stainless Hanging wire, Length adjustable. <ul style="list-style-type: none"> ● Ceiling mount Fringe ● Hanging pole
Operation Temp.	-40°C ~50°C ,indoors and outdoors
Life span	≥ 50,000 hrs
Warranty	3 Years
Certification	