

Vertical Separation, Dual-Squeegee Stencil Printer

Innovative Design Provides True Vertical Separation of PCB and Stencil, Essential for Ultra Fine-Pitch Solder Paste Printing

The STP-550 Dual-Squeegee Stencil Printer provides consistent stencil height and pressure throughout the print stroke and then separates the stencil from the PCB with a true vertical motion that simulates the performance of much more costly automatic equipment. This ergonomically unique design features side-to-side squeegee motion for maximum operator ease while printing single or double-sided boards up to 356 mm x 430 mm (14" x 17"). Many surface mount assemblers consider vertical separation of the stencil from the PCB an essential process parameter for ultra-fine pitch solder paste printing. Because angular separation is inherent to most clamshell type stencil printers, lower cost, benchtop equipment is often overlooked in favor of automatic or semi-automatic equipment, even if volume doesn't warrant these more costly systems.



5500 stencil printer with flexible double-sided board tooling

Purchase a 550 stencil printer.

Key Features:

- Vertical separation of stencil from PCB for high-reliability, ultra fine-pitch printing.
- Dual squeegees with independent pressure controls for bi-directional printing.
- Squeegee holders mounted to linear slides maintain consistent height and pressure throughout print stroke.
- Ergonomic design with unique side-to-side squeegee motion for maximum operator ease.
- Large work area for PCBs up to 356 mm x 430 mm (14" x 17")
- Accepts stencil frames up to 600 mm x 600 mm (24" x 24")
- Highly precise, heavy-duty design weighs approximately 75 Kg (165 lbs.)
- Pneumatically controlled raising and lowering for PCB loading/unloading.
- Universal PCB holders and supports for single or double-sided boards.

- Metal and rubber squeegees included.

At a fraction of the cost, the new and improved **STP-550** provides an extremely reliable solution for ultra fine-pitch applications, through an innovative design that allows true vertical separation of the stencil from the PCB, prior to the angular lift of the stencil holder. In addition, the **STP-5500** features dual squeegees for bi-directional printing, mounted.

To high-precision, linear slide bearings that maintain squeegee height and pressure throughout the operator-controlled print process. Self-locking dial adjustments allow quick and easy X, Y, Z, and R axis alignment of the PCB to stencils in frames up to 600 mm x 600 mm (24" x 24").

Model STP-550 Specifications	
Stencil Frame Size	300 mm x 300 mm to 600 mm x 600 mm (12" x 12" to 24" x 24")
Work Area / Maximum PCB Size	356 mm x 430 mm (14" x 17")
X and Y Axis Range	±13 mm (±0.5")
R Axis Range	±0.5°
Z Axis Range	0-19 mm (0" - .75")
Registration Repeatability	±0.007 mm (±0.0003")
Underside Clearance	25 mm (1")
Dimensions	965 mm L x 965 mm W x 406 mm H (38" L x 38" W x 16" H)
Net Weight	approx. 75 Kg (165 lbs)
Shipping Weight	approx. 100 Kg (220 lbs)



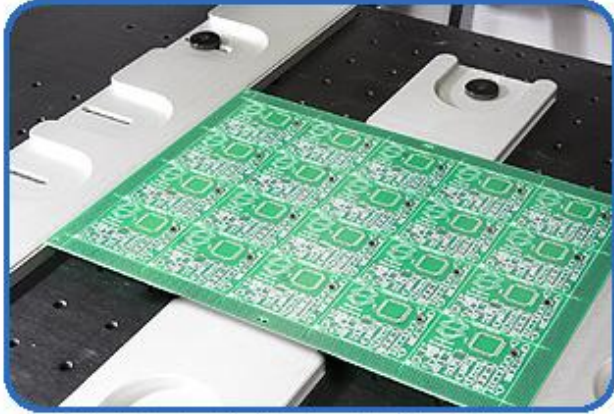
Squeegee blade pressure adjustment



5500 Stencil Printer includes all tooling



Vertical lift lever



Adjustable double-side board holder included



Dual squeegee side-to-side blade shuttle