

Magnetic Gear Wheel Encoder

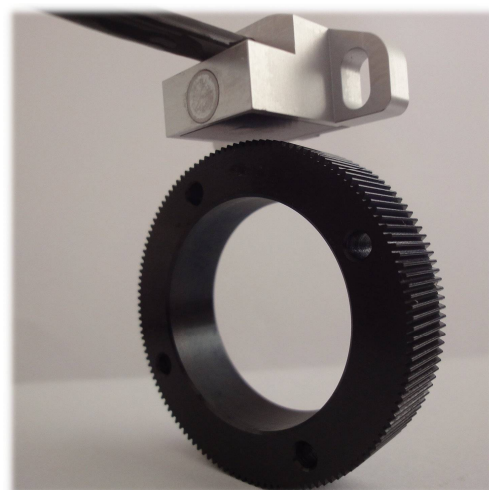
GME-A-XXYY

Feature

- Contactless & high resolution measurement
- High EMC & ESD stability
- Metal housing & complete sealing

Applications

- Speed and position detection
- Spindles of machine tools
- Motors



Specifications of A type

SIGNAL

Output Type	Differential Analog
Signal Amplitude	Sin and Cos with 1Vpp $\pm 20\%$
Respond Frequency	$\leq 200\text{kHz}$

GENERAL

Supply Voltage	DC 5V $\pm 10\%$
Power Consumption(without load)	$\leq 0.3\text{W}$
Operating Temperature	$-20^{\circ}\text{C} \sim 100^{\circ}\text{C}$
Permissible Air Gap	$0.25 \pm 0.03 \text{ mm}$
Protection Class	IP 68

Cable Assignment

Pin 1	Green	A+
Pin 2	Yellow	A-
Pin 3	Brown	+5VDC
Pin 4	White	GND
Pin 5	Blue	B+
Pin 6	Red	B-
Pin 7	Grey	Z+
Pin 8	Pink	Z-
Isolated	Black	---

Standard Version

GME- A – XX YY	XX---	Gear Module	(04 for M=0.4 / 05 for M=0.5)
	YY---	Interpolation Factor	(01: none / 02: 2 folds / 04: 4 folds ...)

Now We Supply

GME-A-0401 / GME-A-0501

Golden Super Bright Co. Ltd.

No.90, Sec. 2, Jhongsing Rd., Chudong Township,
Hsinchu County 31053, Taiwan(R.O.C.)
Tel: 886-3-582-8808 Fax: 886-3-582-8802
Mail: stingo.gsb@gmail.com Website: <http://gsb.taiwantrade.com.tw/>